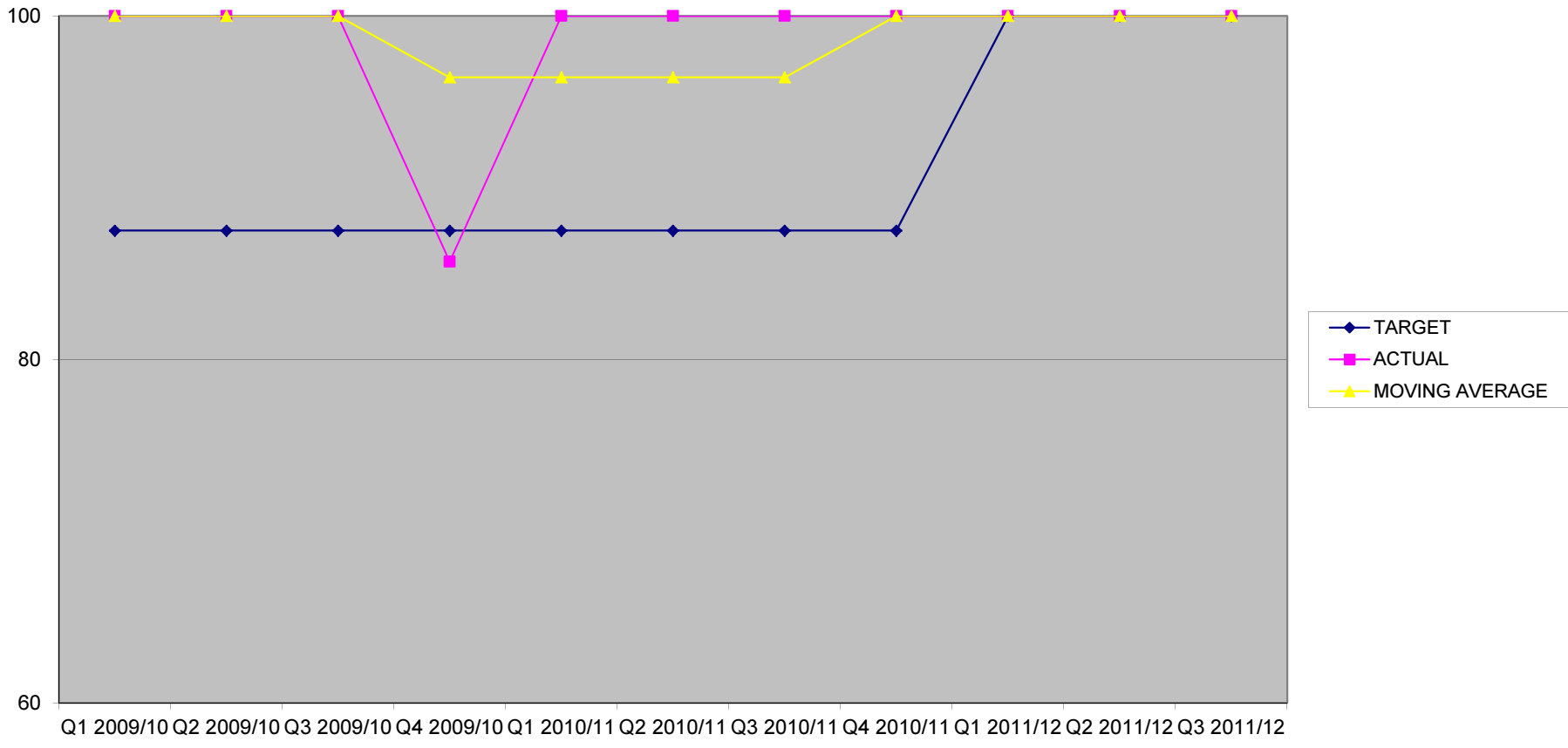


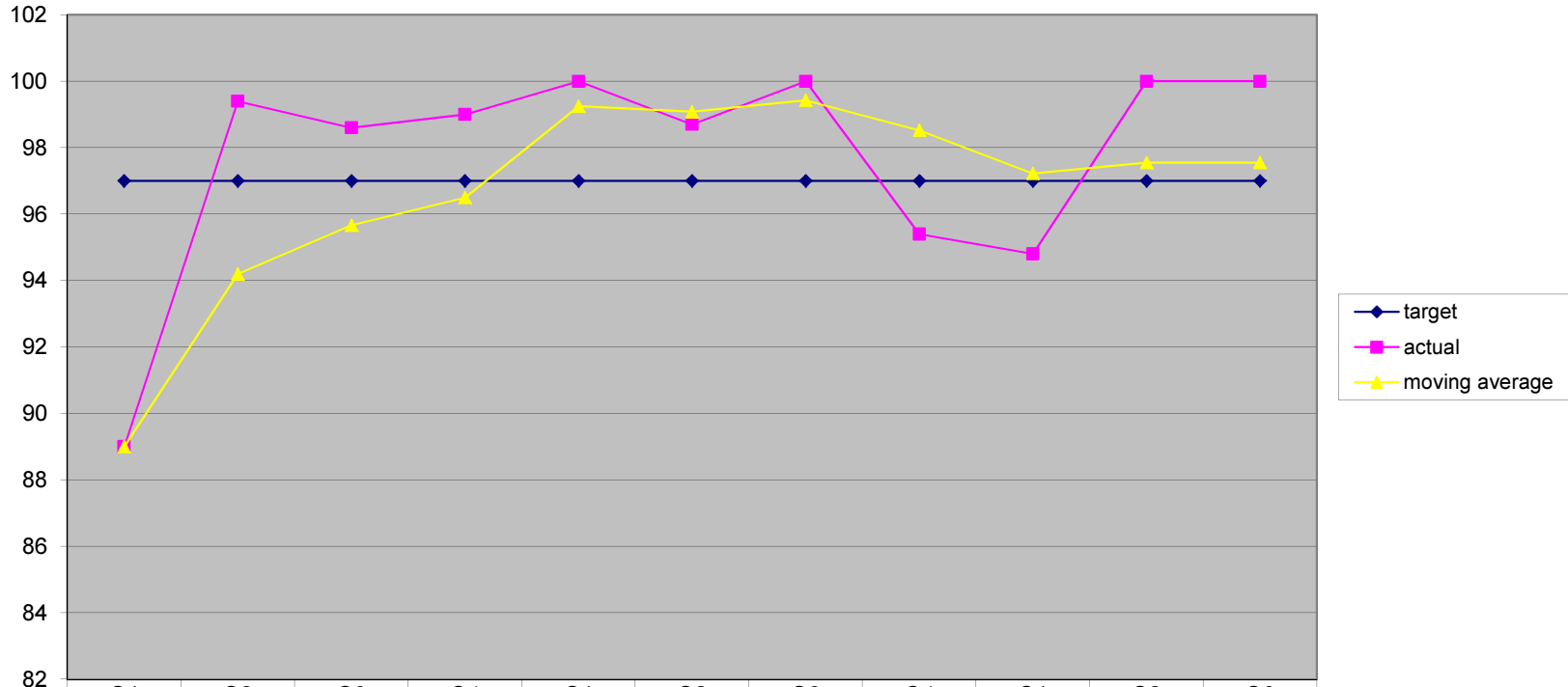
# Percentage of draft reports issued within 15 days

Appendix 1



Percentage of management actions agreed

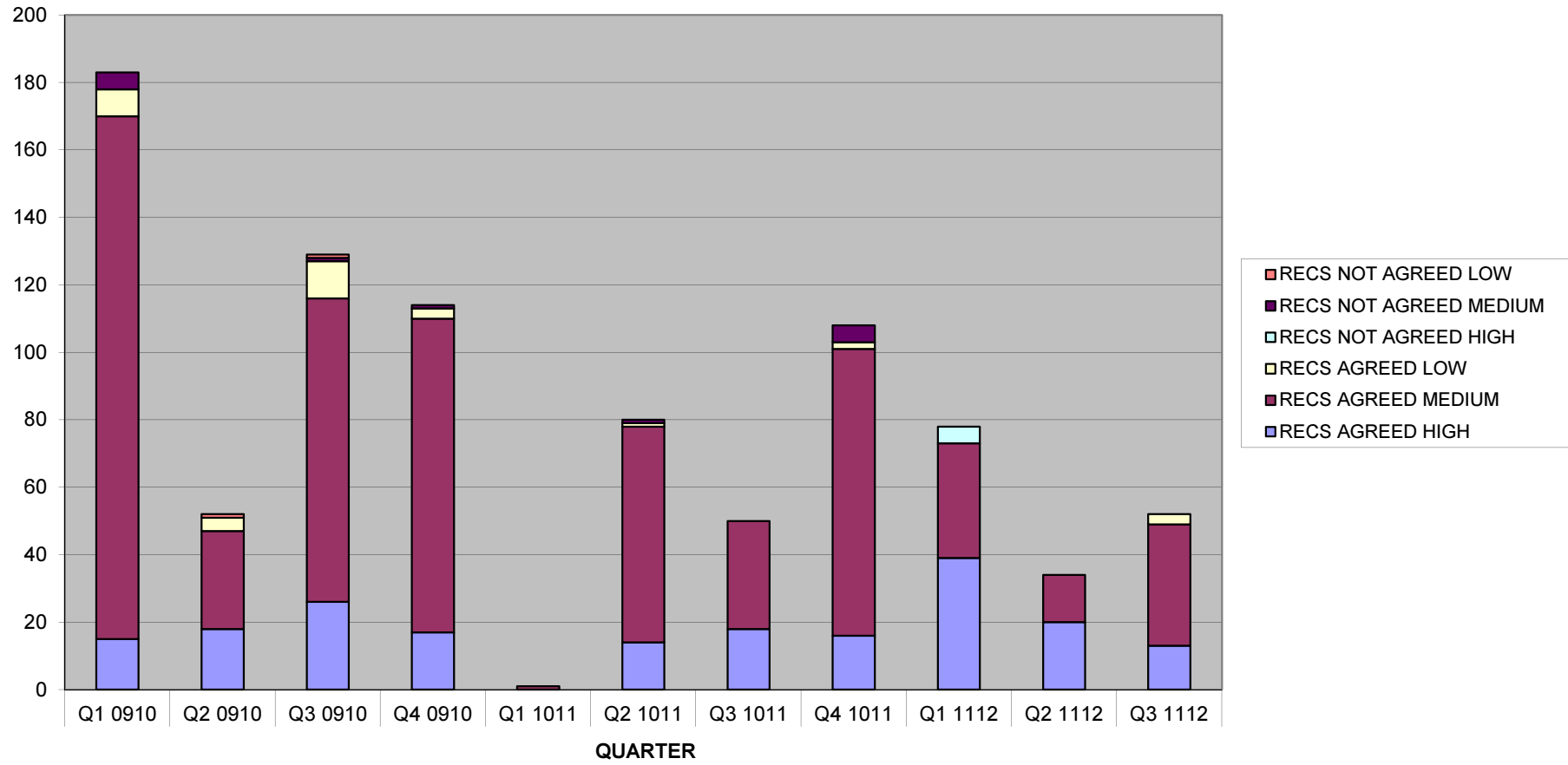
Appendix 2



	Q1 2009/10	Q2 2009/10	Q3 2009/10	Q4 2009/10	Q1 2010/11	Q2 2010/11	Q3 2010/11	Q4 2010/11	Q1 2011/12	Q2 2011/12	Q3 2011/12
—◆— target	97	97	97	97	97	97	97	97	97	97	97
—■— actual	89	99.4	98.6	99	100	98.7	100	95.4	94.8	100	100
—▲— moving average	89	94.2	95.66667	96.5	99.25	99.075	99.425	98.525	97.225	97.55	97.55

# MANAGEMENT ACTIONS AGREED BY NUMBER

## Appendix 2.1



Proportion of agreed management actions implemented 2011/12

